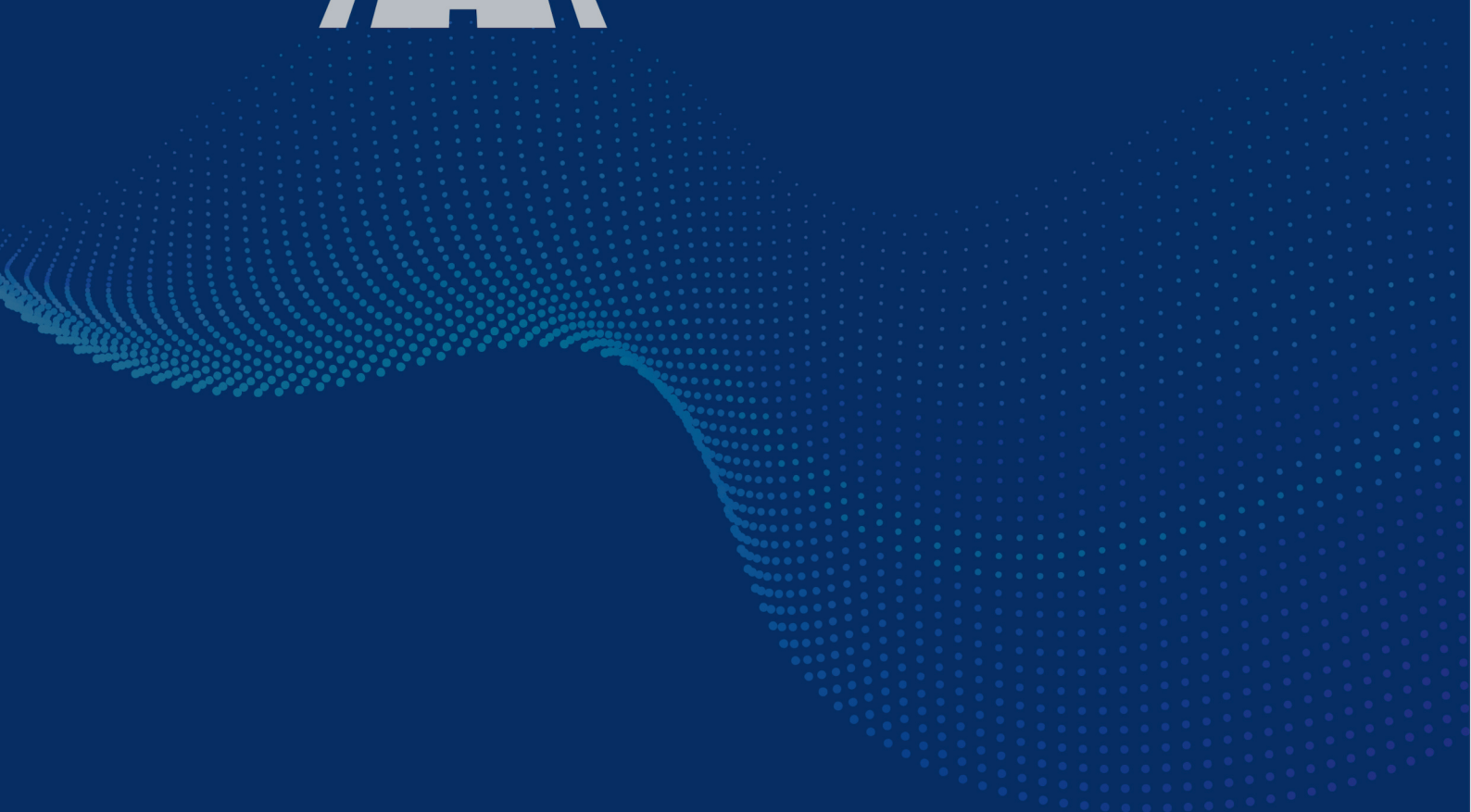




TRANSPOCO





Who we are

Real-time GPS vehicle and asset tracking that's simple, effective, and hassle-free

Transpoco was founded in 2004 and is a leading provider of fleet management solutions. We started with GPS tracking and later expanded our offering to include driving style, fuel efficiency and field service management to create a synchronised fleet management solution and a safer environment for your drivers.

Today, Transpoco is a consolidated telematics provider in Ireland, the UK and France and continues to expand in Europe.



Transpoco **Move**



Optimise your fleet with the latest GPS tracking technology



- **Real-time location**
- **Live traffic**
- **Find the nearest driver**
- **Geofencing**
- **Fleet reports**
- **Driver messaging**
- **Customizable alerts and personalisation**
- **Work 24/7 from any device**
- **Complete driving history**
- **PTO monitoring**
- **Driver ID**

Transpoco Move is a powerful fleet management system with integrated GPS tracking technology that gives you full control of your fleet 24/7 from any device, thanks to our cloud computing software. Transpoco Move offers a wide range of features to help you get the most out of your fleet, including journey and working reports, optimised routes, vehicle location, driving style alerts and much more.

With our dedicated smartphone app Fleet Manager you can easily manage your fleet on the move, with handy features such as:

Complete Fleet Management

Move

Perform

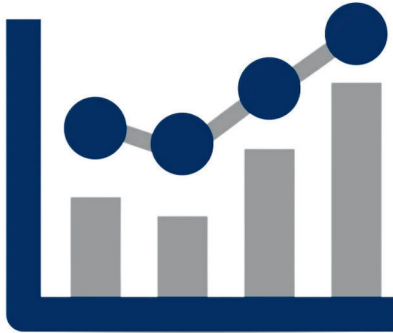
Locate

Maintain

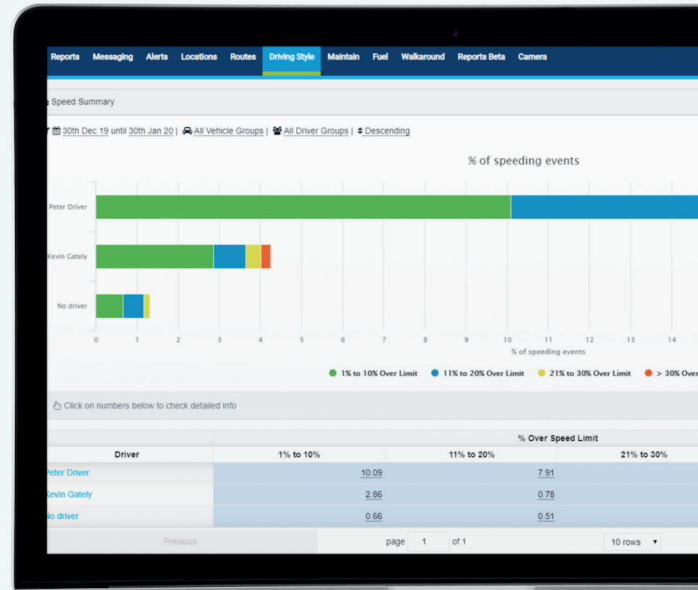
Protect

Vision

Transpoco **Perform**



Fuel card integration,
maintenance and driving safety



- **GPS vehicle tracking**
- **Fuel and safety reports**
- **Fleet performance analysis**
- **Customised consumption targets**
- **Fuel card integration**
- **Maintenance**
- **Walkaround checks**
- **An engaging driver challenge section**
- **Driver behaviour tracking**
- **Dangerous driving alerts**
- **Idling alerts**

Transpoco Perform is fuel management software that combines the key features of Transpoco Move with an advanced interface. Features of the suite include comprehensive fuel data, a dedicated maintenance section, advanced safety/driver behaviour reports, fuel consumption targets and driver challenges. Transpoco Perform puts you in full control of your fleet with 24/7 access to intuitive cloud computing software from any device, supported by an innovative driver app with built-in features

Complete Fleet Management

Move

Perform

Locate

Maintain

Protect

Vision

Transpoco **Locate**



- **Live mapping**
- **Control settings**
- **Live Traffic**
- **Vehicle tracking reports**
- **Fleet manager app**
- **Driver messaging**
- **Location databases**
- **Real-time location**
- **Emergency alerts**



Transpoco Locate offers you an intuitive tracking solution. GPS tracking not only provides all the features you need for effective fleet management, but also reliable, robust and cost-effective. So you can get live updates on your vehicles from anywhere, and use our easy-to-use mobile app to get on-demand reports and alerts wherever you are, whenever you need the

Complete Fleet Management

Move

Perform

Locate

Maintain

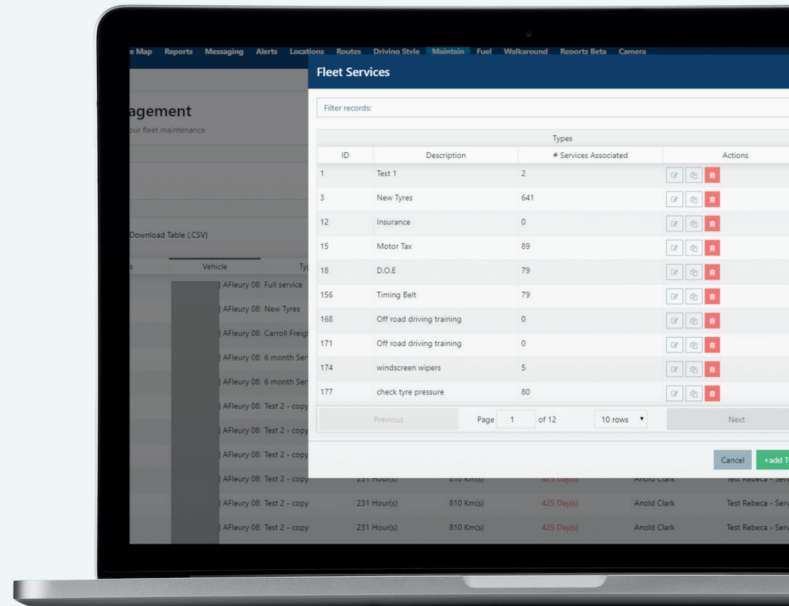
Protect

Vision

Transpoco **Maintain**



Fuel card integration,
maintenance and driving safety



- **Fleet Maintenance**
- **Walkaround Software**
- **Vehicle Fleet Services**
- **App for walkaround checks**
- **Supplier database**
- **Paperless system**
- **Maintenance calendar**
- **System for maintenance alerts**
- **Cost and budget control**

Transpoco Maintain was developed as part of our larger package Transpoco Perform and acts as a complete fleet compliance software. Transpoco Maintain is fully dedicated to recording maintenance, servicing and vehicle inspections. Transpoco Maintain is designed to be used by smaller fleets as well as larger companies, as the price of the package is scalable to fit any budget. We have also designed our Maintain software to be extremely easy to use for both operators and system managers.

Complete Fleet Management

Move

Perform

Locate

Maintain

Protect

Vision

Transpoco **Protect**



AI data to protect your fleet and your drivers



- **ADAS & DSM Cameras**
- **Immediate access to snapshot and video**
- **Reliable data security system**
- **Accurate data of speed and G-force**
- **Instant notifications of alerts**
- **Powerful cloud-based software platform**

Transpoco Protect AI Fleet Safety has combined the latest AI technology, camera and fleet telematics software to bring safety to the forefront of your organisation. This is the next generation of in vehicle technology to protect your drivers from accidents with advanced early collision warnings and driver state monitoring. We know from our years of experience that having the accident footage is too late-you need to be able to see incidents coming and prevent them from occurring to begin with.. This new solution with AI technology will improve the drivers concentration on the road and prevent accidents.

Complete Fleet Management

Move

Perform

Locate

Maintain

Protect

Vision

Transpoco **Vision**



Stay safe with our dash cams,
advanced driver safety and
real-time alerts



- **A reliable, connected camera**
- **Downloadable video and snapshots**
- **Remote access to footage**
- **Real-time alerts and video access**
- **Reliable data security system**
- **Customisable notifications**

Transpoco Vision is the next generation of connected cameras to help you and your team if the worst happens. Transpoco Vision helps you clarify how the accident happened, settle disputes related to traffic accidents, and train your drivers to be safer and more mindful.

Complete Fleet Management

Move

Perform

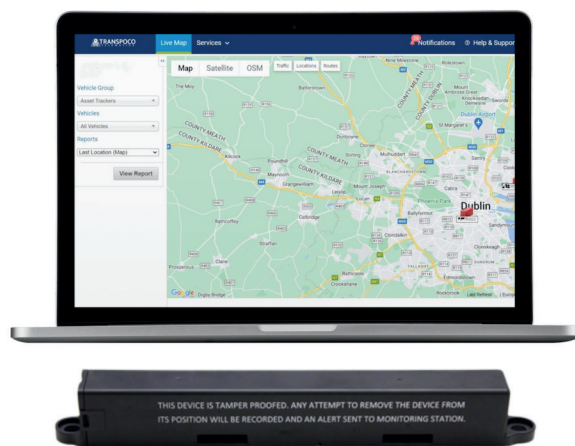
Locate

Maintain

Protect

Vision

Transpoco Pulse



Transpoco Pulse is an ultra-low power tracking asset tracking device designed to provide seamless indoor and outdoor asset tracking on the global Sigfox network.

Boasting an IP68 weatherproof rating and IK10 shockproof construction, Transpoco Pulse is built to withstand the harshest environments.

Simplifying Asset Tracking

With its robust features and ultra-low power consumption, Transpoco Pulse empowers businesses to optimise asset management and safeguard valuable assets.

Versatility for Every Asset

Transpoco Pulse is equipped with a suite of features to cater to a wide range of asset tracking needs:

Transpoco Pulse boasts low-power technology to achieve a battery life of up to 5 years.

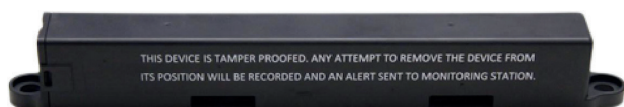
GPS tracking for outdoor location, Wi-Fi sniffing for indoor and outdoor location, Bluetooth advertising for integration with local Bluetooth devices, Bluetooth sniffing for geolocation using local BLE devices, accelerometer to trigger location updates on movement, tamper alert and Sigfox RF.

GPS tracking: Accurately pinpoints asset locations outdoors

Wi-Fi sniffing: Provides precise indoor and outdoor location tracking

Bluetooth advertising: Bluetooth ID (50m radius) for integration with local BLE devices
Bluetooth sniffing: Utilizes local Bluetooth Low Energy (BLE) devices for geolocation

Accelerometer: Triggers location updates based on asset movement



Transpoco

IQ



Transpoco IQ is a bespoke fleet intelligence service that provides you with a comprehensive overview of your fleet's performance.

Our in-house team of experts analyses your telematics data to provide you with recommendations for your fleet's fuel usage, carbon emissions, driver behaviour, and much more.

Transpoco IQ goes beyond traditional reporting, providing you with a personalised intelligence snapshot that drives real-world improvements, including benchmarking your fleet versus fleets across multiple industries throughout Ireland.

Transpoco IQ also includes a review call with our team of experts each month to discuss the report insights and follow-up actions.

Features of Transpoco IQ:

- ➔ Identify fuel purchases with potential issues, such as unverified transactions, to save money and prevent fraud.
- ➔ Track your fleet's fuel consumption by vehicle group to identify areas for improvement.
- ➔ Measure your fleet's carbon emissions by vehicle group to reduce your environmental impact.
- ➔ Identify vehicles with the highest fuel consumption to target for fuel-efficiency improvements.
- ➔ Total Driving Distance - EVs: Track the total driving distance of your electric vehicles to optimise charging schedules.
- ➔ Fleet Benchmarking Report: Compare your fleet's performance to similar organisations
- ➔ Track your drivers' speeding trends to identify risky behaviour and improve road safety.
- ➔ Get a summary of your drivers' speeding infractions to coach and train your team.

Some of our customers





Transpoco
SUITE A 82
James Carter Road
Mildenhall
Suffolk, IP28 7DE
United Kingdom

0121 2810141
info@transpoco.com