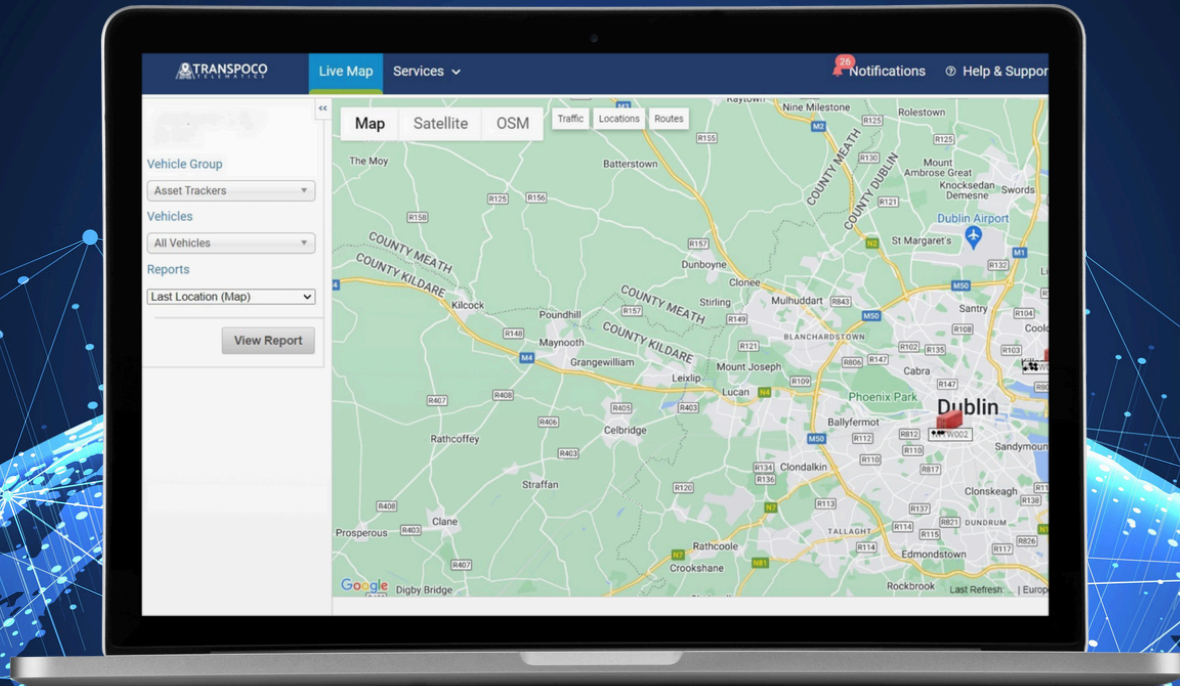




Transpoco

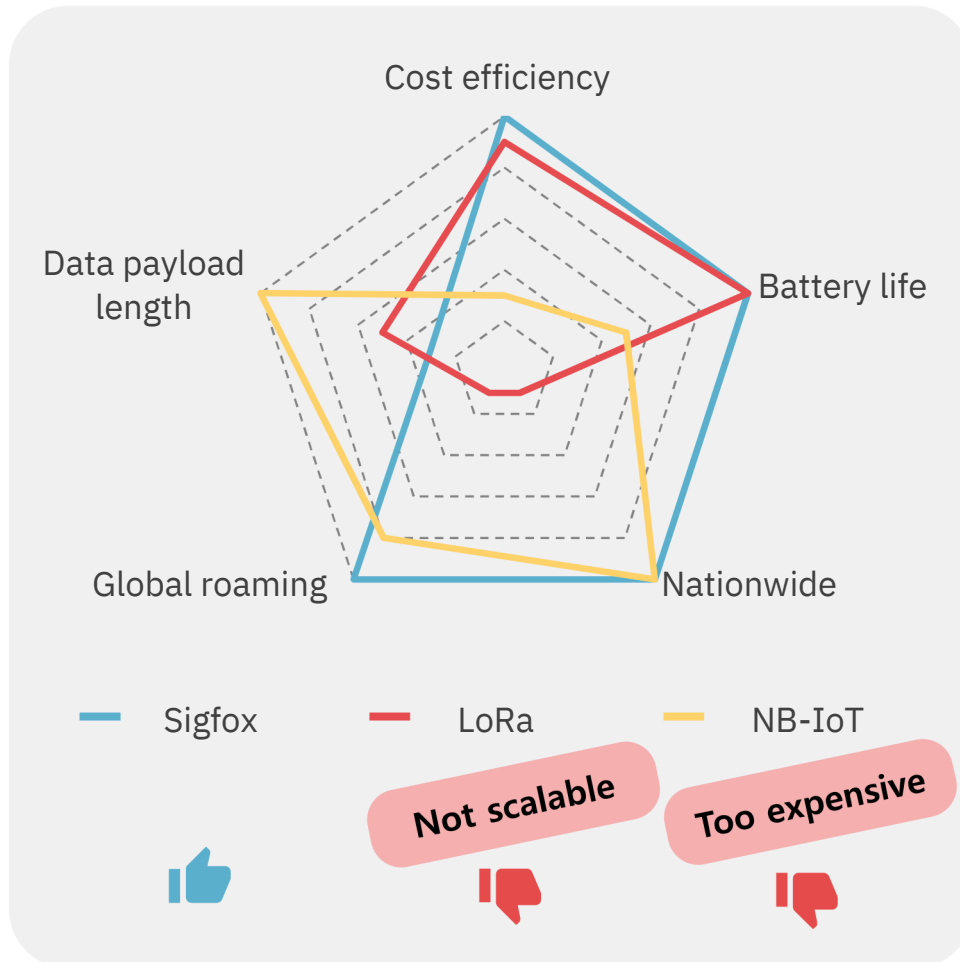


Pulse

Asset Tracking Catalogue



Transpoco Pulse Overview



Cost effective

Transpoco Pulse is cost effective to device and network fee compare to other solutions.



Long battery life

Simplifying communication makes Sigfox to be unbeatable low energy consumption. Life time of the IET10 is 10 years, if it transmits messages twice per a day.

Nationwide and global roaming



Transpoco Pulse supports nationwide network and global roaming to track asset internationally. IET10RCx works on specific Sigfox RC regions and IET10MO works on every Sigfox RC regions as well as supporting global roaming service by Monarch.

Data payload length



Transpoco Pulse uplink payload is limited to 12 bytes and the downlink is 8 bytes. However, it's sufficient to send information of location for tracking.



Transpoco Pulse Key Features



Network-based geolocation

Network-based geographic location is provided by network services.

Less on additional hardware, cost efficiency and low energy consumption, but it has less accuracy and depends on base-station density.

GPS

Satellite-based geolocation. High precise(down to 15m) works almost everywhere on the planet but it is not efficient for indoors and has high battery consumption.

Wi-Fi

It could provide location information by connecting Wi-Fi location service platform. It works both indoor and outdoor with a high density in urban areas.

BLE

Indoor location by using BLE beacon, tracker can be a beacon device or reader. Low power consumption, cost effective but beacon readers should be installed.

Accelerometer

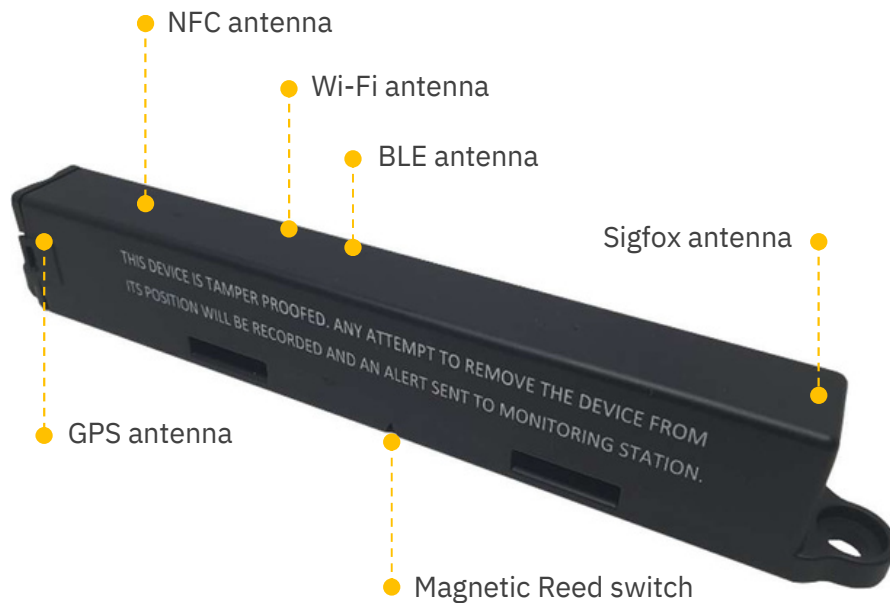
Motion detection from accelerometer can be used to energy saving algorithm as well as motion alarm.

IET10 Transpoco

IET10RC1, IET10RC2, IET10RC3, IET10RC4
IET10RMO



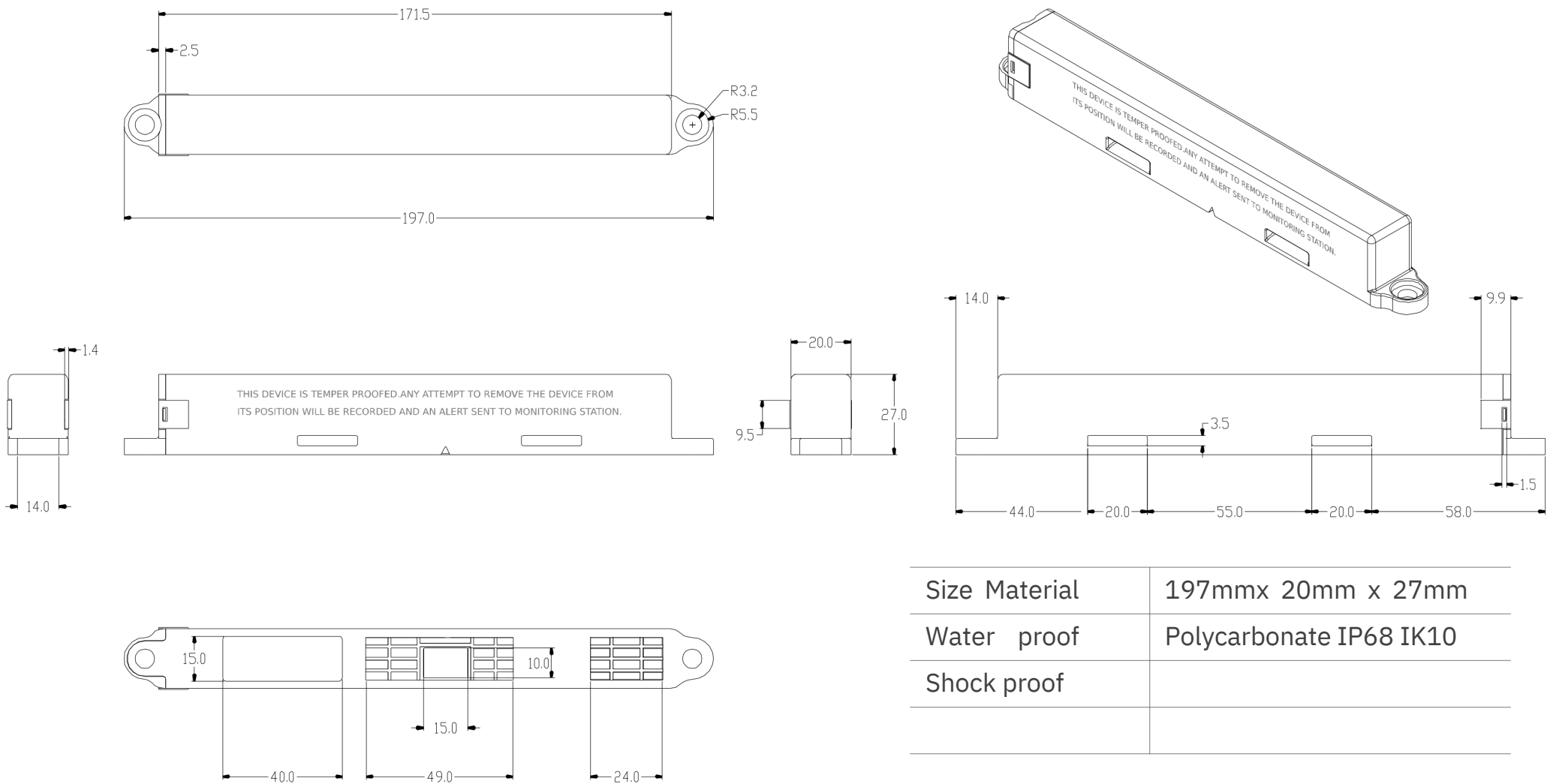
KEY FEATURES



	IET10RCx	IE T10 MO
Size Enclosure Battery	197mmx 20mm x 27mm	
Battery	replaceable	Polycarbonate
Operation temperature	Li-SOCI2, 5400mAh, 3.6V	
Water proof Shock proof	Fixed -30 ~+85 °C	Replaceable
Wireless for location	IK10 GPS, Wi-Fi, BLE,	
Phone connectivity	Sigfox BLE 4.2 support, BLE	
Sigfox RC Sigfox	FOTA	
Monarch Host CPU NFC		
Sensors		
	RC1,2,3,4	All
	None	Support
	Cortex M4F, 512kB Flash / 64kB RAM	
	Tag-A	
	3-axes accelerometer, Magnet reed switch, Temperature(optional)	
Current consumption	Standby 18uA, Sleep 3uA	
Life time	10 years @ 2 messageper a day	



MECHANICAL ENCLOSURE

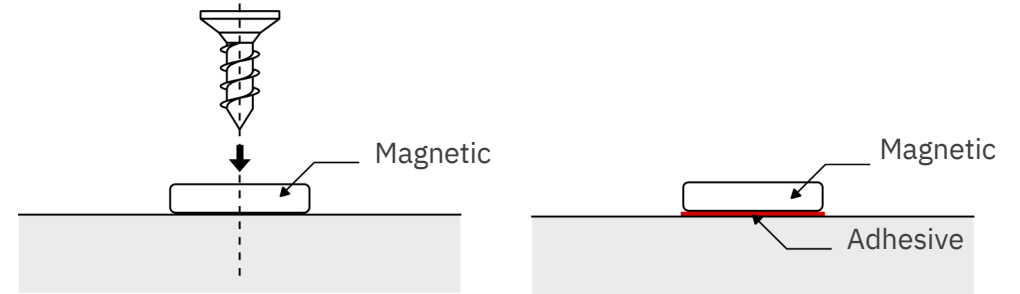


Size Material	197mmx 20mm x 27mm
Water proof	Polycarbonate IP68 IK10
Shock proof	

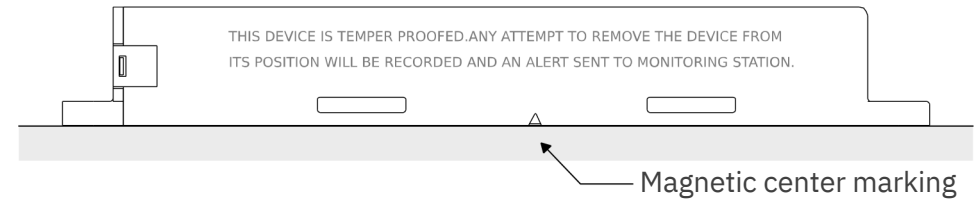


Device installation

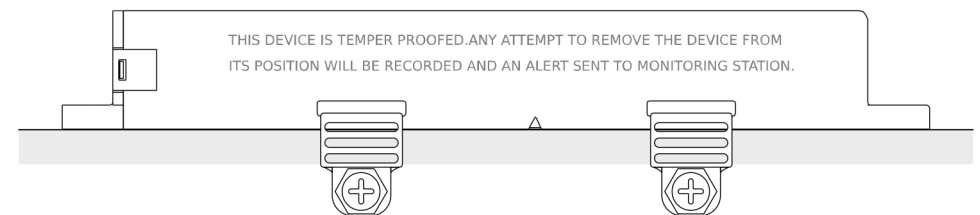
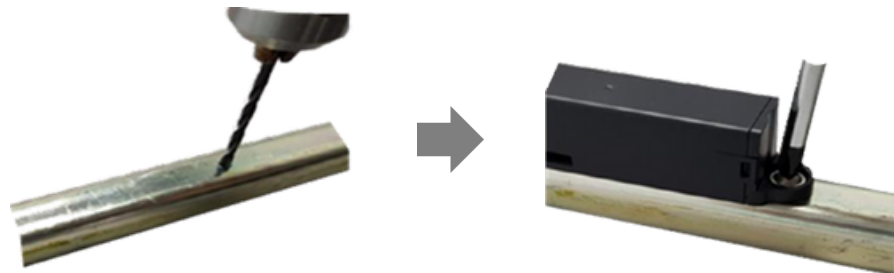
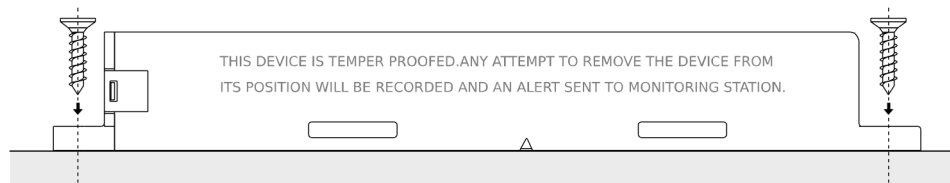
- 1 Attach the magnet
Attach the magnet on an asset using screw or adhesive



- 2 Put IET10 on an asset



- 3 Attach IET10 to asset
Attach IET10 to asset through screw or horse band

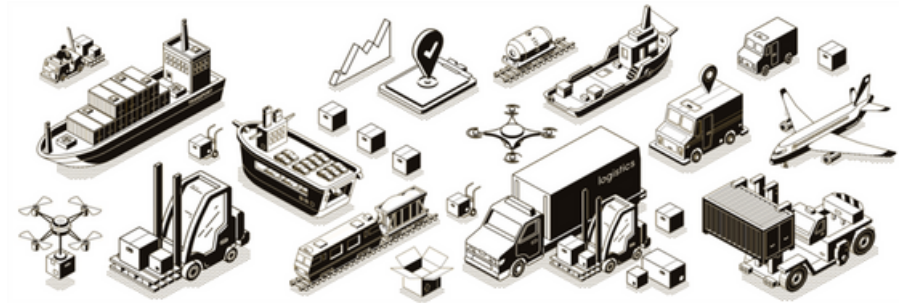


Applications

IET10RC1, IET10RC2, IET10RC3, IET10RC4
IET10RMO



Asset, Logistic tracking
and management



Container cage



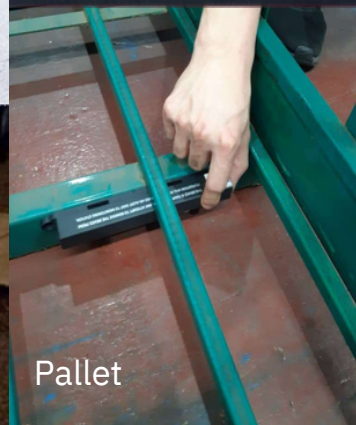
Dollies in airport



Global logistic



Trolley



Pallet



Ground Service
Equipment



Container of recyclable material



Transpoco

